

# CHIPPING HAMMERS

## TOOL MAINTENANCE & REPAIR INFORMATION

**Always use Chipping Hammers with in-line oilers.**

### FIELD OPERATION

#### Before:

1. For 650 Series, tighten handle to 200 ft. lbs.
2. For 450 Series, ensure all nuts and bolts on handle are tight.
3. Flush Air Tool oil or 10W grade equivalent into air inlet before connecting air hose. Install in-line oiler.
4. Check retainer and spring for wear or cracks. Replace retainer if worn.
5. Clean any water and/or dirt from air hose before connecting it to the tool.

#### During:

1. For your safety and that of others, keep tool against work at all times!
2. When moving from one work area to another, shut off tool.
3. Never run the tool without a steel bit or chisel in it.
4. Do not use tool as a wedge or prying instrument
5. When changing tool bit always shut air supply off and disconnect hose.
6. Always use an in-line oiler when operating tool.

#### After:

1. Flush tool with cleaning solvent, then refill with Air Tool oil or 10W grade equivalent.
2. Do not leave tool in water or in dirt.
3. For 650 Series, tighten handle to 200 ft. lbs.
4. For 450 Series, ensure all nuts and bolts on handle are tight.
5. Store the tool well oiled.

**REMEMBER: PREVENTIVE MAINTENANCE  
WILL ASSURE MAXIMUM  
PERFORMANCE FROM ALL  
OF YOUR APT TOOLS.**

### TROUBLE SHOOTING GUIDE

#### If tool runs erratically:

1. Insure handle is on tight. Retighten to 200 ft. lbs. torque (650 Series Chipping Hammers).
2. Check all nuts and bolts to ensure they are tight (450 Series Chipping Hammers).
3. Flush cleaning solvent through the tool and flush Air Tool oil or 10W grade equivalent into air inlet.
4. Check for wear in front bushing (nozzle). Check for wear in the shank of the steel chisel. A worn steel shank or a worn front bushing means loss of air seal and less than optimum tool performance.

**If tool has a throttle valve air leak:  
Remove plug and inspect "o" rings or sealing  
surfaces for damage.**

#### If tool is not hitting hard enough:

- 1 Check for wear in front bushing (nozzle).
- 2 Insure handle is on tight. Retighten to 200 ft. lbs. torque.
- 3 Check all nuts and bolts to ensure that they are tight (450 Series Chipping Hammers).
- 4 If front bushing is not worn and handle is on tight, then check for wear on internal parts, if worn, they should be replaced. Check clearances between piston and cylinder very carefully.
- 5 Check tool internally for rust and/or dirt.

#### If you cannot shut the tool off:

- 1 Immediately turn off air source, then disconnect air supply.
- 2 Check the throttle valve for damaged or missing o'rings.

# APT

**CHIPPING  
HAMMERS  
450/470 SERIES**



APT Chipping Hammers are used for scaling, chiseling, removing concrete build-up from the inside of cement mixers, light concrete demolition and cement finishing, form stripping, etc.

**FEATURES**

- Flapper valve design allows dirt to pass without stopping the tool
- Deep case-hardened alloy steel cylinders
- Drop-forged handles
- Replaceable bushing
- Adjustable exhaust deflector
- Choice of optional retainers including the APT latch-type
- Price includes oval retainer and locking spring

**MODEL 450 SERIES FEATURES:**

- 4-bolt style handle for ease of maintenance
- Available in 2", 3", and 4" strokes
- Handle design has a vibration dampening feature

**MODEL 470 SERIES FEATURES:**

- Same features as 450 Series; with tapered nose

**ORDERING INFORMATION:**

**Standard Accessories:**

- 7022 oval collar retainer
- 1941 retainer spring
- 759 reducing bushing 7/8"-24 to 3/8" NPT female
- 18210 oval collar, tapered

**Optional accessories at extra charge:**

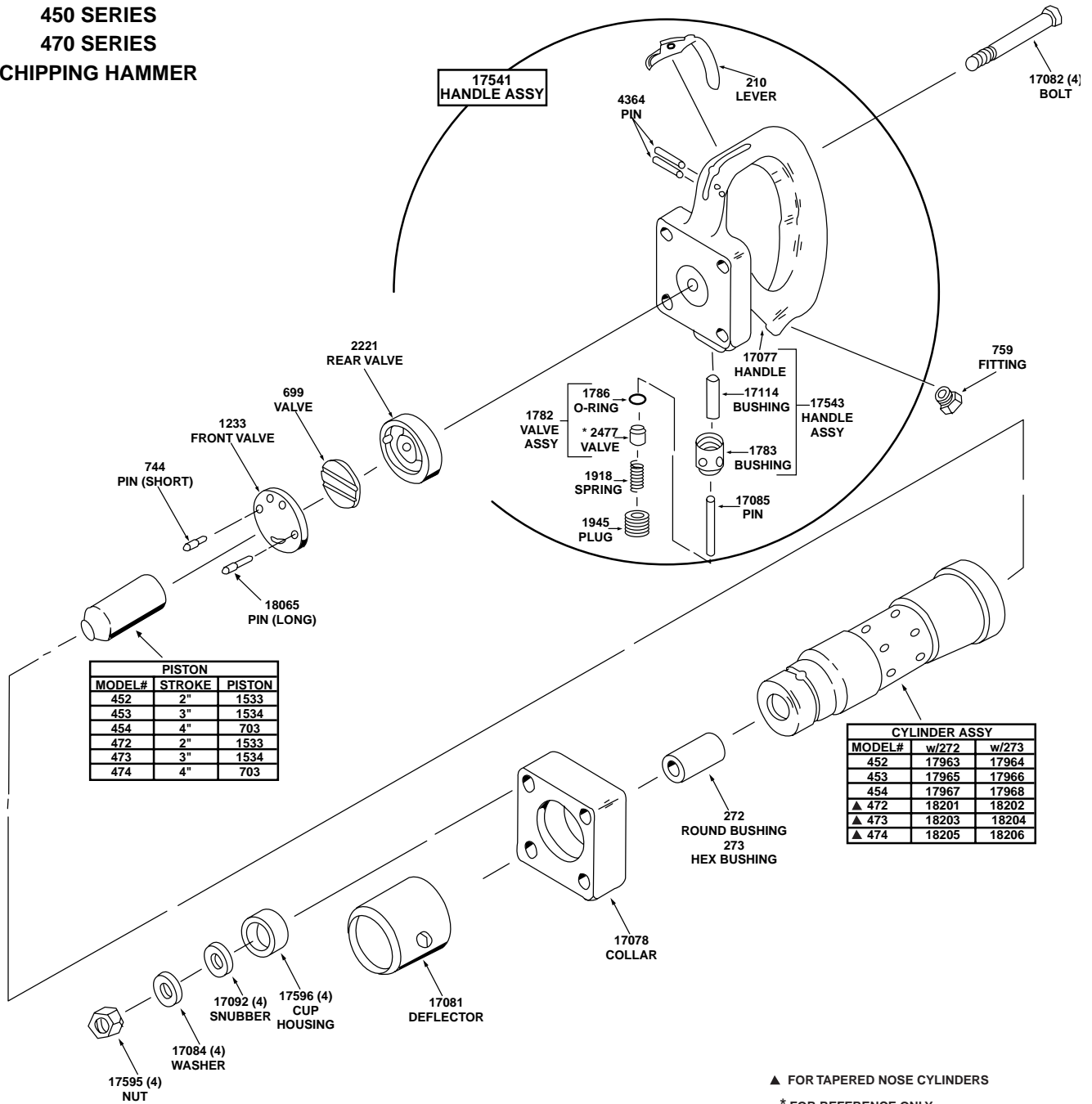
- 3383 latch-type retainer (no springs needed)
- 3026 quick-change retainer
- 5550 ball-type retainer
- 6144 round collar retainer
- 3388 7/8"-24 to 1/2" hose barb swivel
- 2698 7/8"-24 to 3/8" NPT swivel
- 9109 10 ft., 1/2" dia. whip hose with universal coupler and 7/8"-24 to 1/2" hose barb swivel

**SPECIFICATIONS**

Part Number	Chuck Bushing	Bore	Stroke	BPM	CFM @ 90 PSI inlet pressure	Weight lbs. without retainer	Length inches without retainer	Air Inlet NPT
<b>450 SERIES STRAIGHT-NOSE CHIPPING HAMMERS</b>								
17728	.680 round or	1-1/8	2	2100	32-34	17	12-3/4	7/8-24 STD
17729	.580 hex	1-1/8	2	2100	32-34	17	12-3/4	7/8-24 STD
17259	.680 round or	1-1/8	3	1650	33-35	18	14-9/16	7/8-24 STD
17080	.580 hex	1-1/8	3	1650	33-35	18	14-9/16	7/8-24 STD
17731	.680 round or	1-1/8	4	1375	34-36	19	15-9/16	7/8-24 STD
17732	.580 hex	1-1/8	4	1375	34-36	19	15-9/16	7/8-24 STD
<b>470 SERIES TAPERED-NOSE CHIPPING HAMMERS</b>								
18216	.680 round or	1-1/8	2	2100	32-34	17	13-1/4	7/8-24 STD
18217	.580 hex	1-1/8	2	2100	32-34	17	13-1/4	7/8-24 STD
18218	.680 round or	1-1/8	3	1650	33-35	18	15-1/4	7/8-24 STD
18219	.580 hex	1-1/8	3	1650	33-35	18	15-1/4	7/8-24 STD
18220	.680 round or	1-1/8	4	1375	34-36	19	16	7/8-24 STD
18221	.580 hex	1-1/8	4	1375	34-36	19	16	7/8-24 STD

# AMERICAN PNEUMATIC TOOL

**APT MODEL**  
**450 SERIES**  
**470 SERIES**  
**CHIPPING HAMMER**



PISTON		
MODEL#	STROKE	PISTON
452	2"	1533
453	3"	1534
454	4"	703
472	2"	1533
473	3"	1534
474	4"	703

CYLINDER ASSY		
MODEL#	w/272	w/273
452	17963	17964
453	17965	17966
454	17967	17968
▲ 472	18201	18202
▲ 473	18203	18204
▲ 474	18205	18206

▲ FOR TAPERED NOSE CYLINDERS  
 \* FOR REFERENCE ONLY  
 (THESE PARTS NOT SOLD SEPARATELY)

**CHIPPING  
HAMMERS  
650 SERIES**



APT Chipping Hammers are used for scaling, chiseling, removing concrete build-up from the inside of cement mixers, light concrete demolition and cement finishing, form stripping, etc.

**FEATURES**

- Flapper valve design allows dirt to pass without stopping the tool
- Deep case-hardened alloy steel cylinders
- Drop-forged handles
- Replaceable bushing
- Adjustable exhaust deflector
- Choice of optional retainers including the APT latch-type
- Price includes oval retainer and locking spring

**MODEL 650 SERIES FEATURES:**

- Traditional pistol grip handle
- Available in 2", 3", and 4" strokes

**ORDERING INFORMATION:**

**Standard Accessories:**

- 7022 oval collar retainer
- 1941 retainer spring
- 759 reducing bushing 7/8"-24 to 3/8" NPT female

**Optional accessories at extra charge:**

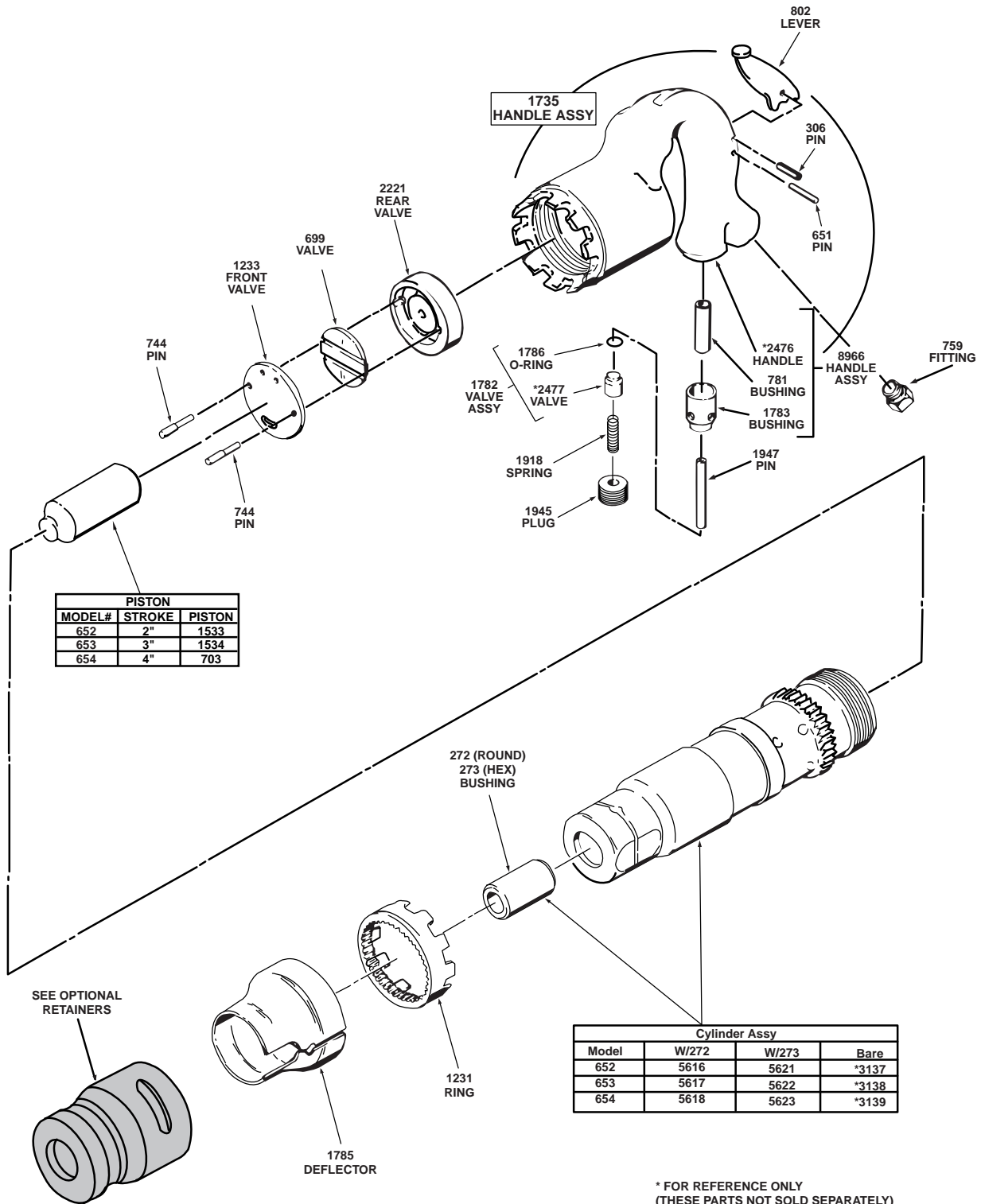
- 3383 latch-type retainer (no springs needed)
- 3026 quick-change retainer
- 5550 ball-type retainer
- 6144 round collar retainer
- 3388 7/8"-24 to 1/2" hose barb swivel
- 2698 7/8"-24 to 3/8" NPT swivel
- 9109 10 ft., 1/2" dia. whip hose with universal coupler and 7/8"-24 to 1/2" hose barb swivel

**SPECIFICATIONS**

Part Number	Chuck Bushing	Bore	Stroke	BPM	CFM @ 90 PSI inlet pressure	Weight lbs. without retainer	Length inches without retainer	Air Inlet NPT
5298	.680 round or	1-1/8	2	2100	32-34	12	13-1/4	7/8-24 STD
5299	.580 hex	1-1/8	2	2100	32-34	12	13-1/4	7/8-24 STD
5300	.680 round or	1-1/8	3	1650	33-35	14	15-1/4	7/8-24 STD
5301	.580 hex	1-1/8	3	1650	33-35	14	15-1/4	7/8-24 STD
5302	.680 round or	1-1/8	4	1375	34-36	16	16	7/8-24 STD
5303	.580 hex	1-1/8	4	1375	34-36	16	16	7/8-24 STD

# AMERICAN PNEUMATIC TOOL

## APT MODEL 650 SERIES CHIPPING HAMMER



\* FOR REFERENCE ONLY  
(THESE PARTS NOT SOLD SEPARATELY)

**New!**

**AMERICAN PNEUMATIC TOOLS**

# APT 260 Series Chipping Hammers

**PN 18651 - INLET BUSHING, 1/2" NPT x 1/2"**



APT Chipping Hammers are used for scaling, chiseling, removing concrete build-up in mixers, light concrete demolition, cement finishing, form stripping, etc.

Available in 3" and 4" strokes.

- Patent Pending Ball Valve Design - more forgiving of dirt and debris, easier to maintain, made from corrosion resistant material
- Ball-type throttle valve - less complicated, makes teasing the throttle easier
- New 1/2" x 1/2" NPT threaded air inlet bushing for a more secure fit. A screen has also been added to prevent dirt and debris from entering the tool
- The new 2-bolt design makes the tool easier to maintain in the field
- Drop-forged handle and collar for a stronger, longer lasting tool
- Adjustable exhaust deflector
- Replaceable bushing

Price includes oval retainer and locking spring, 6-foot whip hose, air fitting and swivel.

APT MODEL 260 CHIPPING HAMMER  
PATENT PENDING

## APT 260 SERIES 2-BOLT, D-HANDLE CHIPPING HAMMER

Length	Chuck	Stroke size, each	Item no.	Weight, w/o retainer
14-9/16	.680 Round	263 - 3	18667-04	14 lbs
14-9/16	.580 Hex	263 - 3	18670-04	14 lbs
15-9/16	.680 Round	264 - 4	18668-04	15 lbs
15-9/16	.580 Hex	264 - 4	18671-04	15 lbs

Talk to customer service about additional retainer options to turn your tool into a universal collared rental machine!

**PN 9266** →  
WHIPOSE ASSY  
(UF, 1/2"HSE x 6ft, with 1/2" NPT SWIVEL)

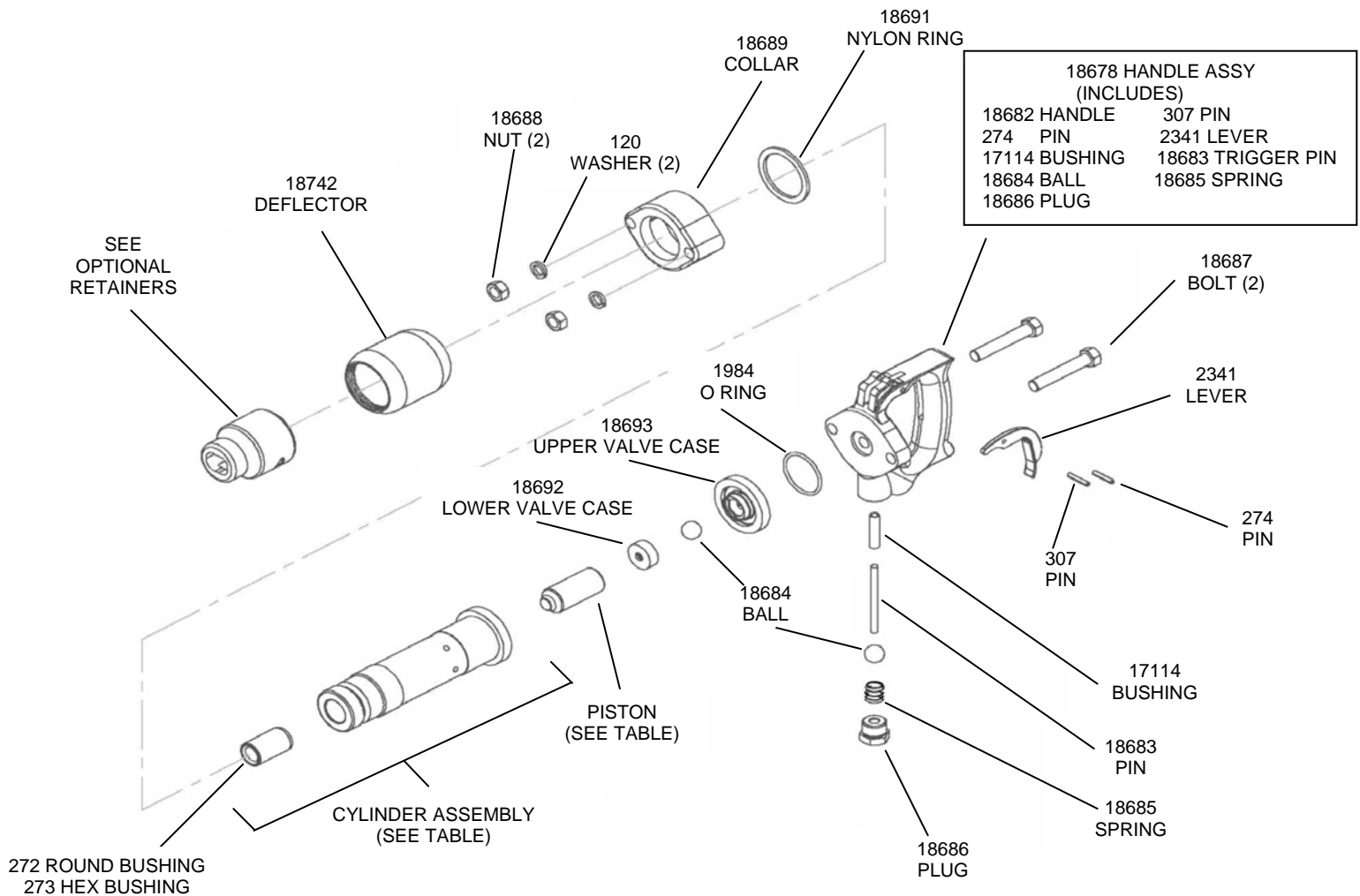
→ **PN 3486 -SWIVEL ASSY, 1/2 NPT X 1/2 Hose Barb**

**Built to Last...**

**AMERICAN PNEUMATIC TOOLS, INC.**  
9949 Tabor Place, Santa Fe Springs, CA 90670

Phone 562-204-1555 • 800-532-7402  
Fax 562-204-1773 • 800-715-6502  
www.apr-tools.com • e-mail: info@apr-tools.com

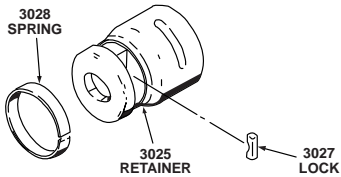




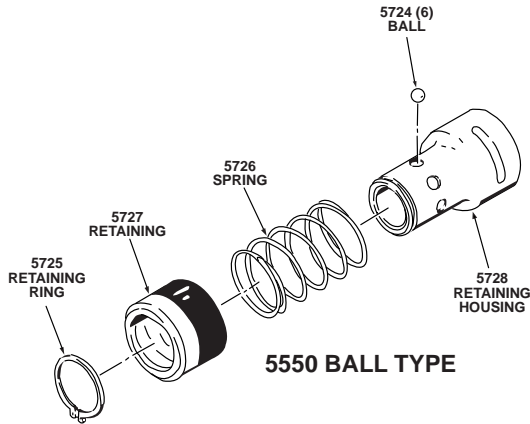
2 BOLT CHIPPING HAMMER		
MODEL	CYLINDER ASSEMBLY	PISTON
M263, 3" STROKE, ROUND BUSHING	18673	1534
M263, 3" STROKE, HEX BUSHING	18676	1534
M264, 4" STROKE, ROUND BUSHING	18674	703
M264, 4" STROKE, HEX BUSHING	18677	703

**For assistance in any sales, technical, maintenance or repair questions, please call APT @ Phone 800 532 7402 or 562 204 1555  
 Fax 800 715 6502 or 562 204 1773  
 e-mail [info@apt-tools.com](mailto:info@apt-tools.com)**

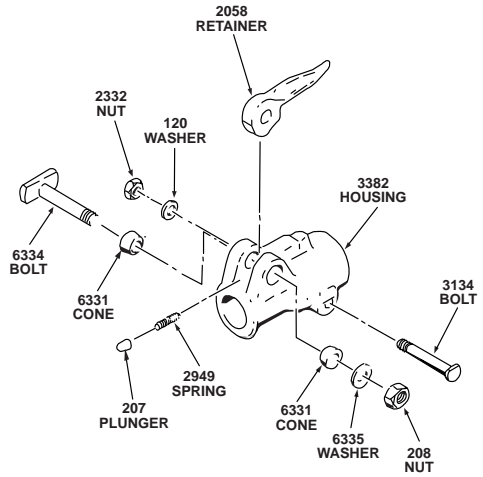
## OPTIONAL RETAINERS (FOR APT STRAIGHT-NOSE CHIPPING HAMMERS)



**3026 QUICK CHANGE**



**5550 BALL TYPE**



**3383 LATCH-TYPE  
IMPORTANT**

DO NOT USE 3383 Latch-type Retainer with .580 hex-shank chipping hammer steel. The latch does not properly catch the round collar, thereby allowing the steel to shoot out of the chipping hammer. This retainer (3383 Assy) should only be used with .680 round collar or round shank steel only.



**7022 OVAL COLLAR**

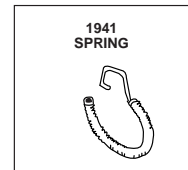


**6144 ROUND COLLAR**

### OPTIONAL RETAINER (FOR APT TAPERED-NOSE CHIPPING HAMMERS)

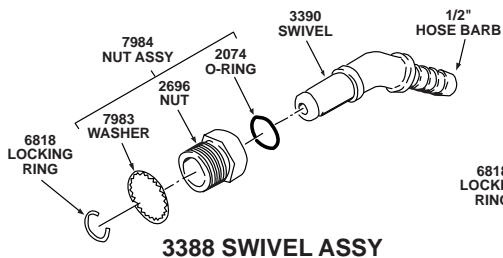


**18210 OVAL COLLAR**

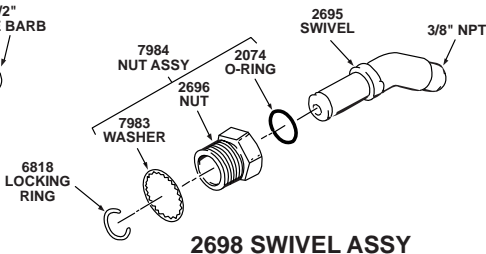


**1941 SPRING**

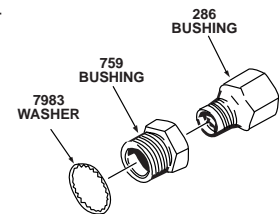
### OPTIONAL FITTINGS



**3388 SWIVEL ASSY**



**2698 SWIVEL ASSY**



**REDUCING BUSHING**